



Presbyterian Church (U.S.A.)

Presbyterian Mission



Congo Partnerships 101

Democratic Republic of Congo



Congo is larger than the USA
East of the Mississippi.



DR Congo – A Special Place

Congo River, third largest in the world
Generates electricity sold as far away as
South Africa

Active volcano – Mt. Nyirongongo

Abundance of mineral wealth (copper, gold,
diamonds, coltan, ...)

Mountains, forest, peatlands, savannas



DR Congo –Megadiverse* fauna

Animals native to the Democratic Republic of the Congo:

- Aardvark
- African brush-tailed porcupine
- African buffalo^[3]
- African bullfrog
- African civet
- African clawed frog
- African dwarf frog
- African golden cat^[3]
- African helmeted turtle
- African leopard
- African manatee
- African palm civet
- African rock python
- African soft-furred rat
- African soft-shelled turtle
- African striped weasel
- African tree shrew
- Allen's swamp monkey
- Angora colobus
- Aubry's flap-necked lizard
- Ball python
- Banded mongoose
- Banded water cobra
- Bili ape
- Black-and-white colobus
- Black-collared lovebird
- Black mamba
- Black-necked spitting cobra
- Blue duiker
- Blue-headed wood dove
- Blue monkey
- Bohor reedbeek
- Bongo
- Bonobo
- Bushpig
- Cape bushbuck
- Cape hyrax
- Central African oyan
- Chameleon
- Chimpanzee^[3]
- Common agama
- Common duiker
- Common egg eater
- Common eland
- Congo scorpion
- Congo water cobra
- Crocodile
- Dwarf crocodile
- Nile crocodile
- Red-tailed monkey
- De Brazza's monkey
- Egyptian fruit bat
- African forest elephant
- Western gorilla^[3]
- Gaboon viper
- Gallagher's free-tailed bat
- Giant eland
- Giant forest hog
- Giant otter shrew
- Goliath beetle
- Grant's zebra
- Greater cane rat
- Greater kudu
- Great Lakes bush viper
- Green bush viper
- Green mamba
- Grey parrot
- Handsome spurfowl
- Hartebeest
- Hedgehog leaf-toed gecko
- Hippopotamus^[3]
- Honey badger
- Jameson's mamba
- Johnston's chameleon
- Katanga Mountain bush viper
- Kob
- Kordofan giraffe
- Leopard tortoise
- Lesser flamingo
- Lichtenstein's hartebeest
- Lion^[3]
- Many-banded snake
- Marsh mongoose
- Monitor lizard
 - Angolan white-tailed monitor
 - Nile monitor
 - Savannah monitor
- Moustached monkey
- Northern white rhino
- Okapi
- Olive baboon
- Oribi
- Pangolin
 - Giant pangolin
 - Long-tailed pangolin
 - Tree pangolin
- Patas monkey
- Puff adder
- Puku
- Red river hog
- Roan antelope
- Rock hyrax
- Rough-scaled bush viper
- Sable antelope
- Serval
- Side-striped jackal
- Sitatunga
- Southern reedbeek

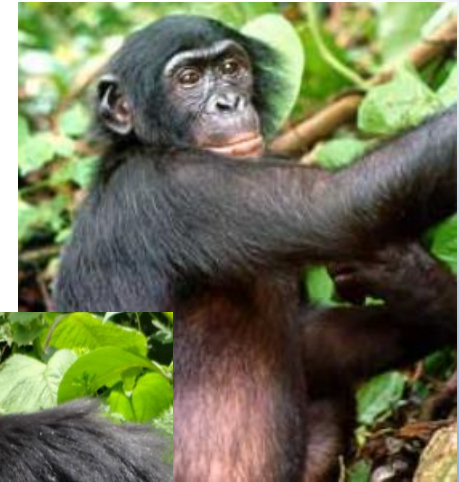
• Okapi

• Bonobo

• Mountain gorillas

• Forest elephants

• Hippos, crocodiles, vipers



* Nations that harbor the majority of Earth's species and high numbers of endemic species.

Congo Basin Forest – Lungs of the world

- Second largest tropical forest in the world.
- Spans across six Central African countries.
- Amazon, Borneo and Congo are considered the lungs of our planet.
- Contains the largest tropical peatland complex in the world. Major carbon sink.



DR Congo – A Special Land – Special people

- 450 people groups
- 215 languages spoken
- 5 national languages: Lingala, Kikongo, Swahili, Tshiluba and French
- People will often speak 3, 4 or even more languages.
- Batwa are the original inhabitants of the Great Lakes region. Traditionally hunter-gatherers, guardians of the forest.
- Bantu groups migrated from West Central Africa (Nigeria, Cameroon) 4,000 to 5,000 years ago.
- There is rapid growth of the population. The young population is a rich potential for the country, but they face very high unemployment.



Eglise du Christ au Congo – the Protestant Church in the DRC

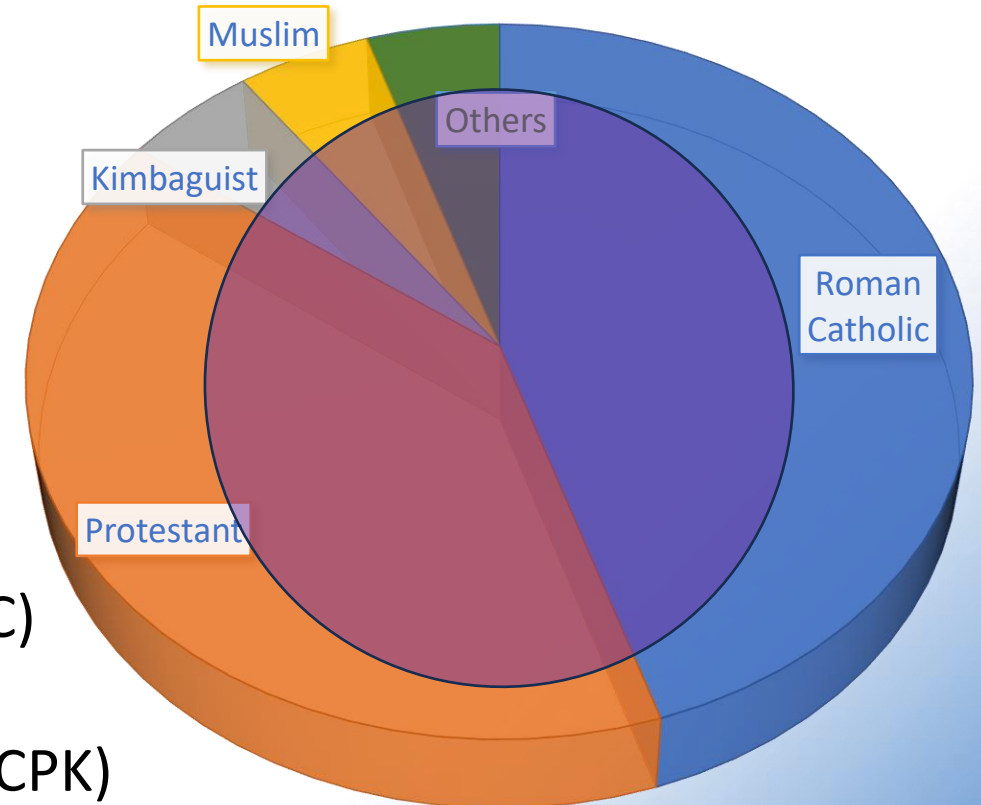


The “Protestant Church” has 103 member “communities” of which two are:

31^{eme} Communauté Presbyterienne au Congo (CPC)

32^{eme} Communauté Presbyterienne de Kinshasa (CPK)

There is extensive acceptance and participation in traditional beliefs, including by Christians.



Presbyterian World Mission partners in the DRC

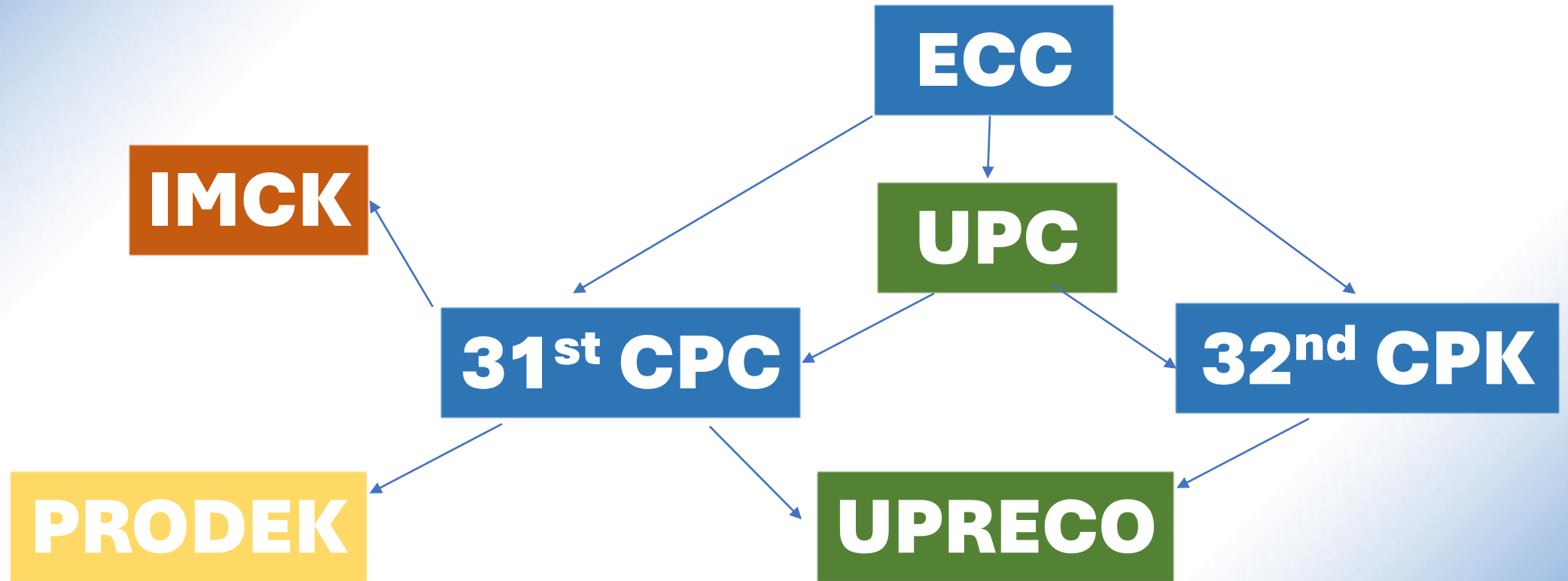
- Church of Christ of Congo (ECC)
- Presbyterian Community of Congo (CPC)
- Presbyterian Community of Kinshasa (CPK)

- Protestant University of Congo (UPC)
- Sheppard and Lapsley Presbyterian University of Congo (UPRECO)
- Christian Medical Institute of Kasai (IMCK)

- Program for Development of Kasai (PRODEK)



Presbyterian World Mission partners in the DRC



ECC – Eglise du Christ au Congo (Protestant Church/Council)

CPC – Presbyterian Community of Congo

CPK – Presbyterian Community of Kinshasa

UPC – Protestant University of Congo

UPRECO – Presbyterian University of Congo

IMCK – Christian Medical Institute of Kasai

PRODEK – Program for Development in East Kasai

Geographic spread of ecclesiastic partners

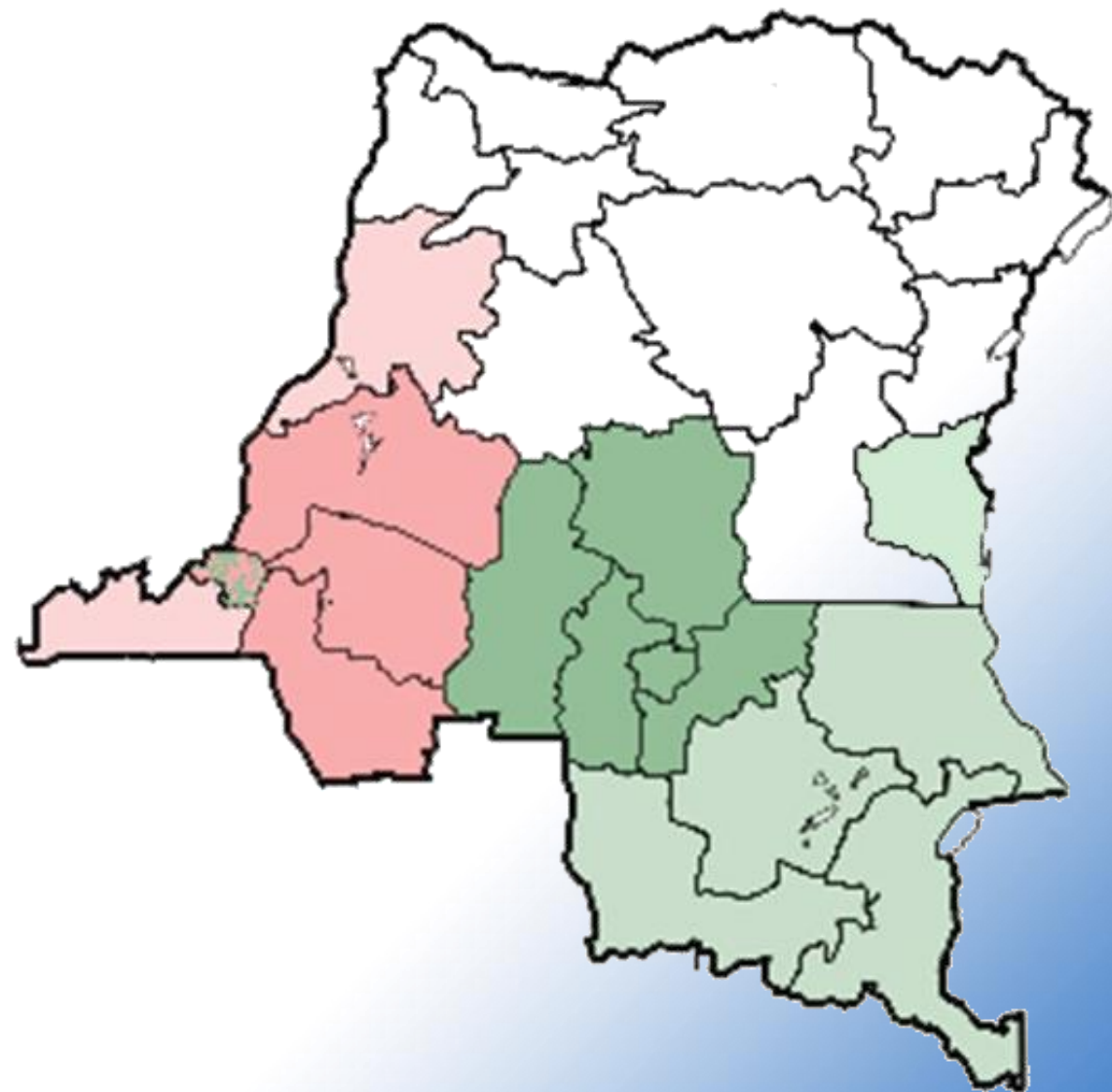
ECC



CPC

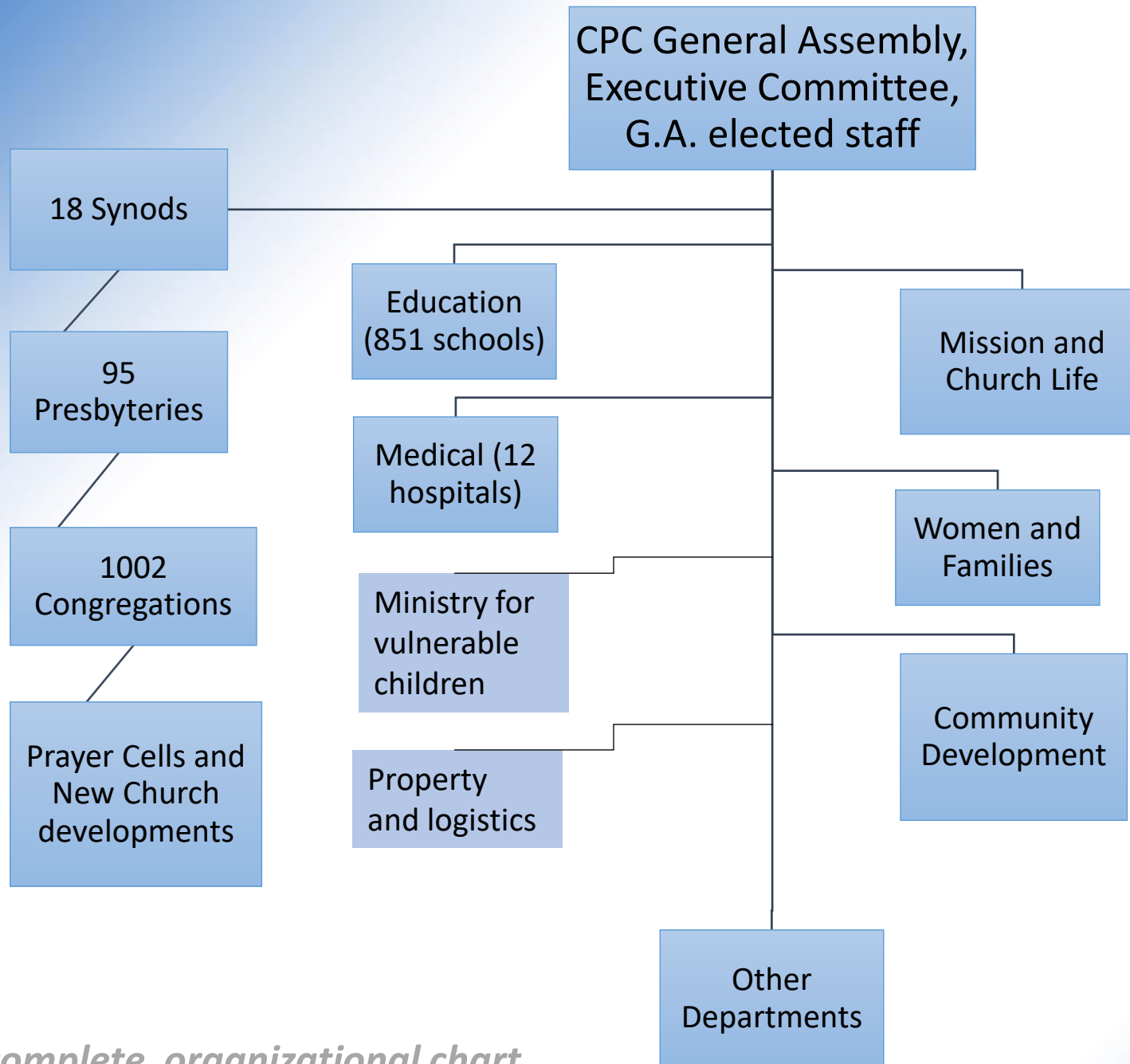


CPK



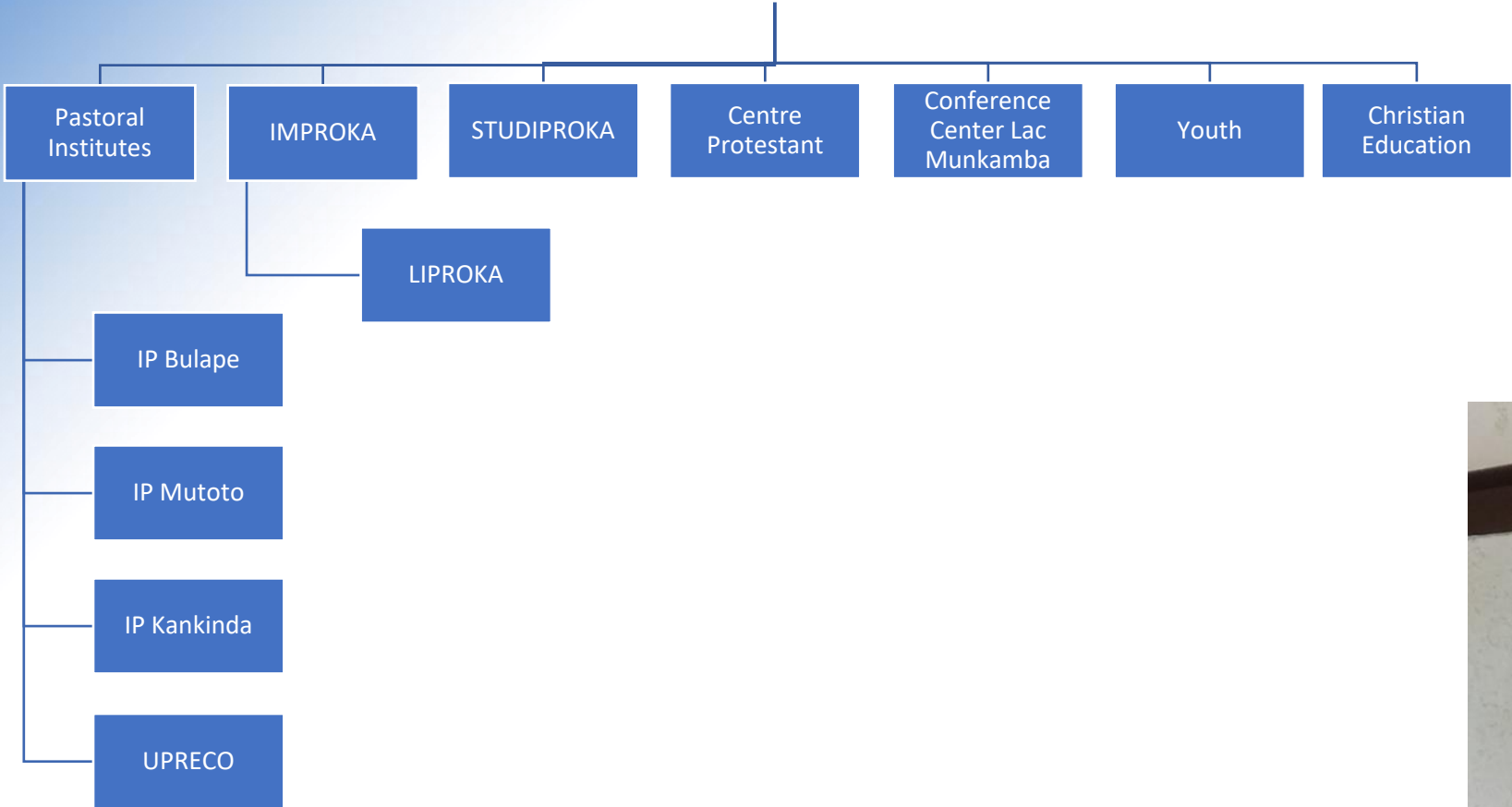


General Secretary,
Rev. Tshidinda Mamba Jean



Note: incomplete organizational chart

Dept. of Mission and Church Life



Pastor Kabala Mboyamba
Mission and Church Life, Director

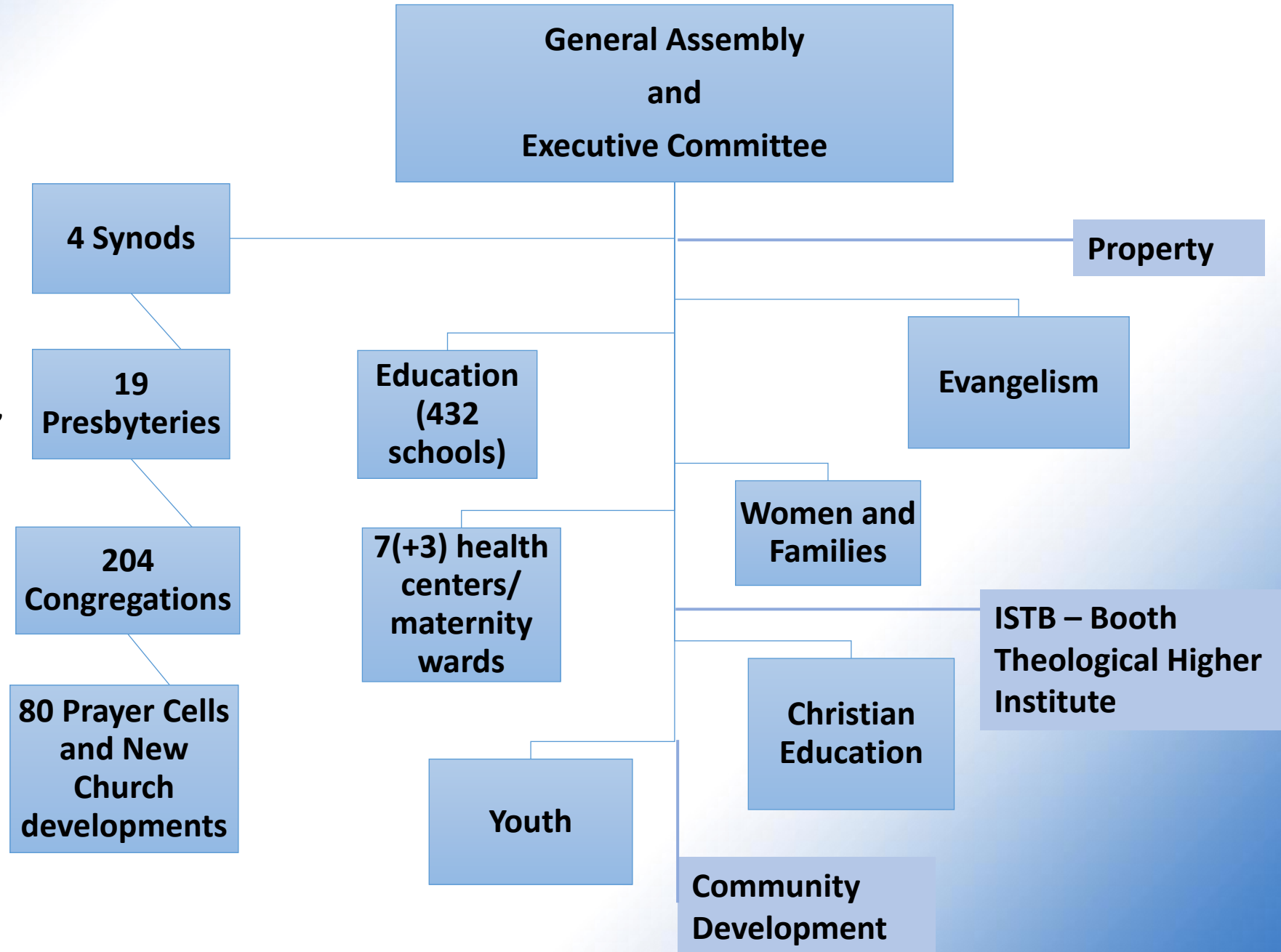




President & Legal Representative,
Rev. Isaac Kalonji Mukendi



Incomplete organizational chart



Communities of Collaboration

We're better together!





U.S. partners engaged in the Congo

Presbyterian Mission Agency

World Mission Africa Office
Presbyterian Hunger Program
Presbyterian Disaster Assistance
Office of Public Witness
Presbyterian Ministry to the UN

Presbyteries

East Virginia
New Castle
Sheppards and Lapsley

Churches

Too numerous to list all

Presbyterian Women

Support groups and NGOs

CORUS (formerly IMA World Health)

Medical Benevolence Foundation
The Outreach Foundation
Booth Leadership Initiative

Congo Helping Hands
Friends of IMCK
Congo Leadership Initiative



Jose LaMont Jones

Jose serves as an Education Consultant for the Presbyterian Community of Kinshasa.



jose.jones@pcusa.org



Inge Sthreshley and Larry Sthreshley

Inge works with IMA World Health/CORUS International focusing on nutrition, home gardens and fuel-efficient cooking stoves.

Larry serves with CORUS International as Senior Advisor: Innovation, Localization & Partnerships. Through an agreement between CORUS and PCUSA a portion of Larry's time is focused on Presbyterian work, primarily in the Congo.



inge.sthreshley@pcusa.org

LSthreshley@CorusInternational.org



Christi & Jeff Boyd

Christi works with churches in Congo, Madagascar, Niger, Rwanda and South Sudan focused on the interest of women and children.

Jeff is the liaison for the Presbyterian Church USA in Central Africa region.



christi.boyd@pcusa.org

jeff.boyd@pcusa.org



Rev. Cheryl Barnes and Nana Adwoa Ofori

Rev. Cheryl is the Coordinator for the Africa Office in World Mission.

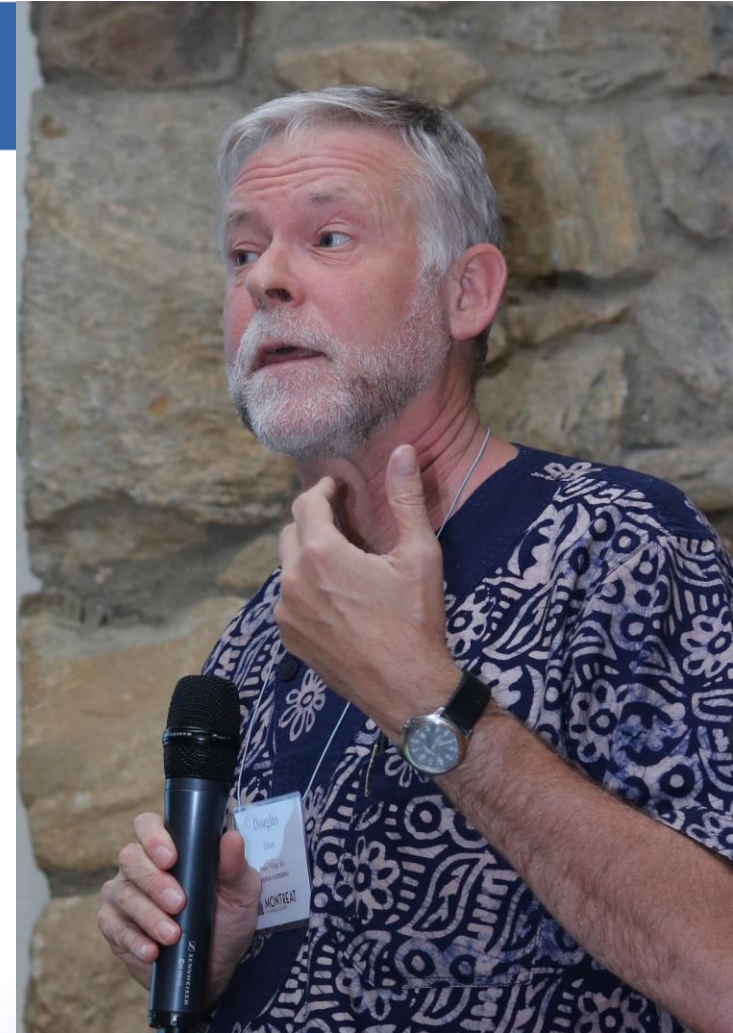


Nana is the Mission Specialist supporting the coordinator (and other colleagues) for the work throughout Africa.



Doug Tilton

Doug is the PC(USA) Liaison for Southern Africa with responsibilities to resource the church for advocacy work in Africa.



Doug.tilton@pcusa.org



Congo Mission Network – Better Together!





Congo Mission Network (CMN)

A **network** of

PC(USA) synods, presbyteries, congregations, and members

committed to working in true partnership

With

congregations, presbyteries, synods, general assemblies and institutions of PC(USA) partners in the Congo in order to **help each other**:



Congo Mission Network (CMN)

- To reflect on what partnership means in each context and to share relevant experiences;
- To learn how to communicate more effectively with partners;
- To listen more carefully;
- To facilitate conversations around areas of common concern;
- To assist partners to advocate for change that supports our common mission and promotes the well-being of the Congolese;
- To explore opportunities for collaboration along common interests;
- To identify unmet needs in the US that may be addressed by the gifts of our partners in the Congo.



Congo Mission Network subgroups

Advocacy

See Roberta Spalding, rlspalding@earthlink.net

Education (Build Congo Schools)

See Anne Crane, craneal46@gmail.com

Other subgroups can be formed around interests of participants.





Presbyterian Church (U.S.A.)

Presbyterian Mission