



ECP 31^{er} CPC



EP TSHIA BANTU

Matricule Secope 9036401

INSTITUT Adalbert KALAMBAYI

OPTIONS:-Péda Générale
-Agri-Générale

DON PCUSA



**Old
Friends
Came to
See Me**







Tshiluba Hymnals

IMPROKA
Kananga

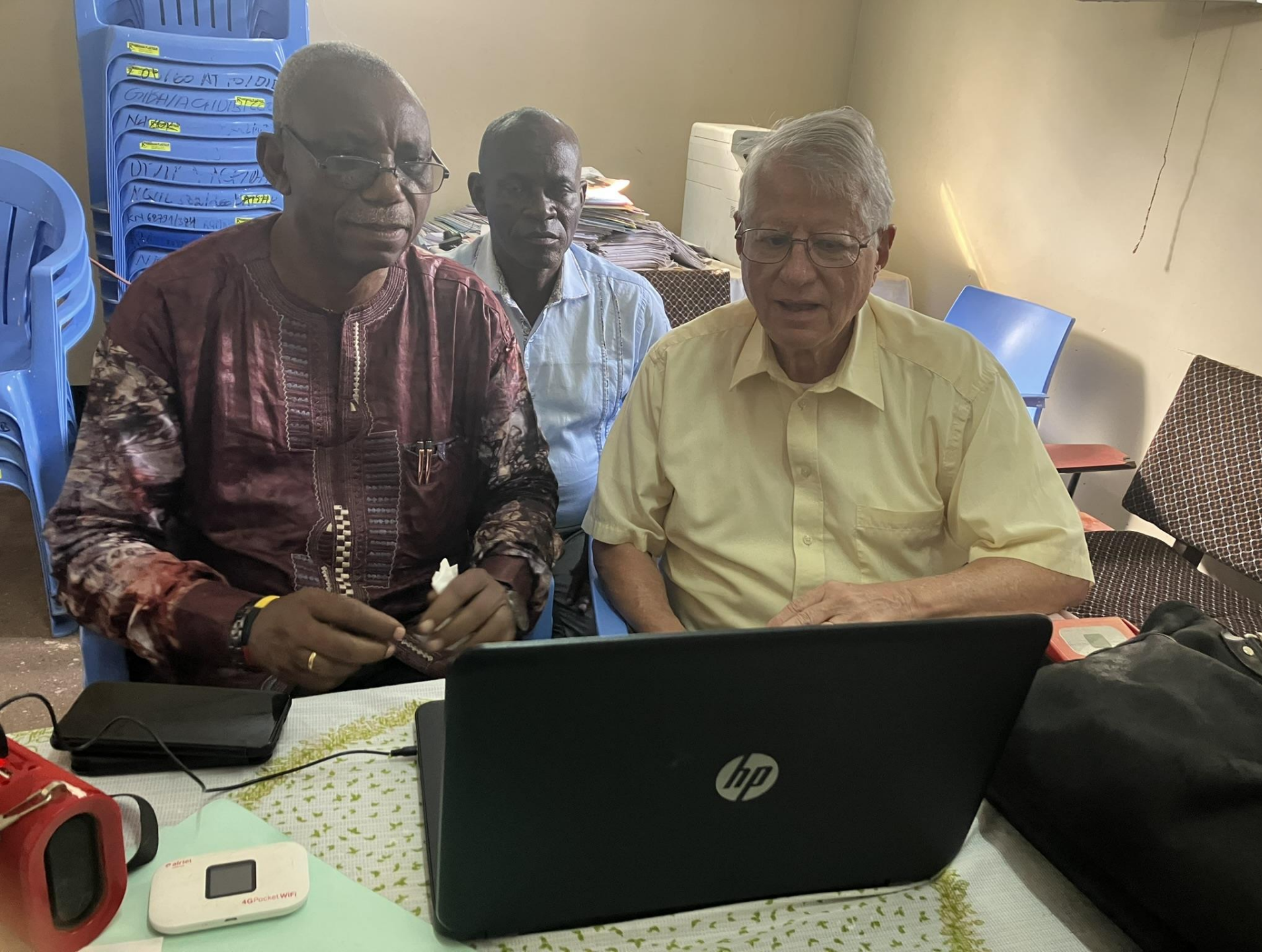
Printing Press

**Thanks to
New Castle
Presbyery!**



THANKS TO NEW CASTLE PRESBYTERY





Zoom Planning Session

Mbuji-
Mayi

ZapoZapo School

First “Build
Congo
Schools”
school
10 years
ago.



Built with
help of
Build
Congo
Schools







Rain Water Tank

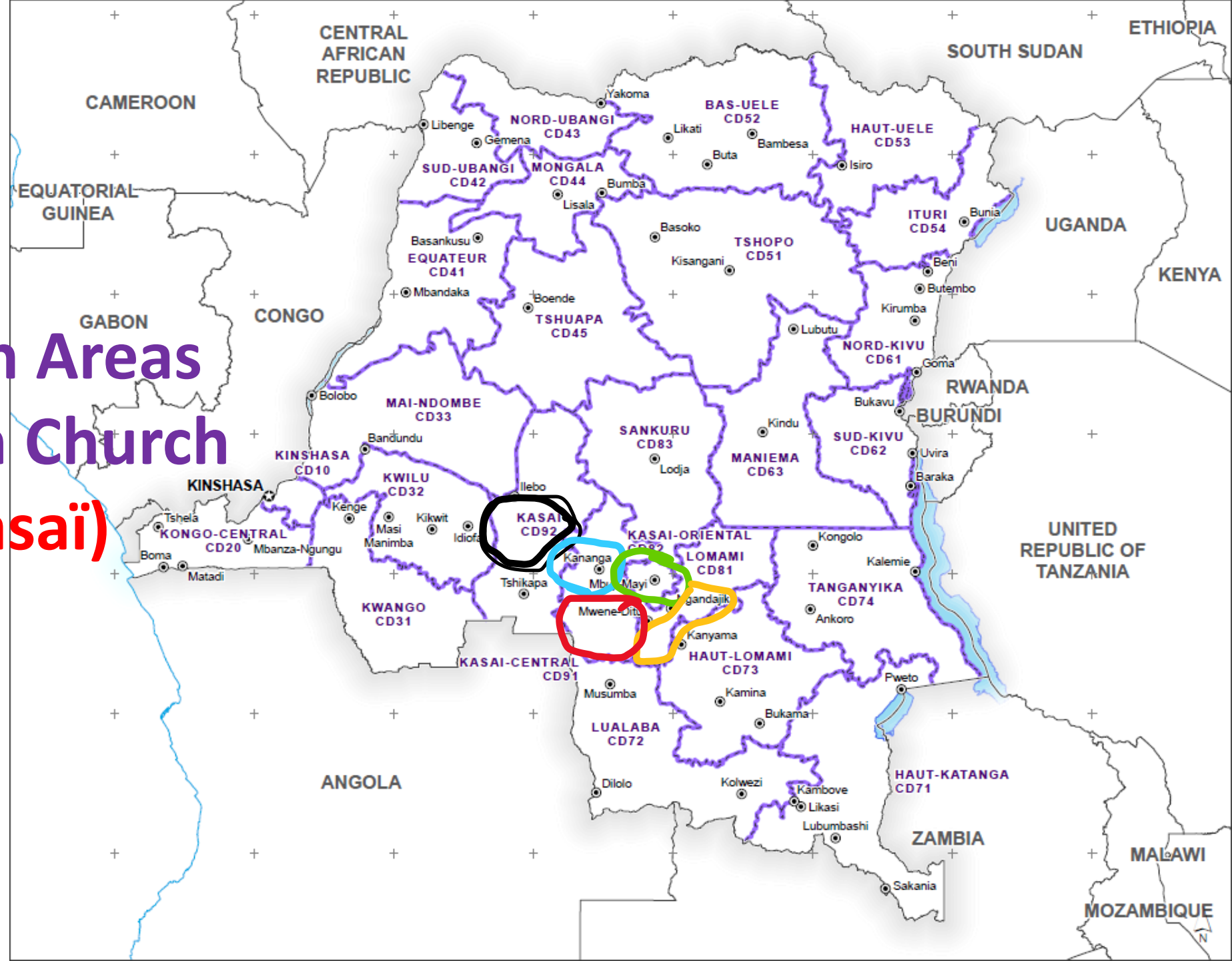
Provided by
Sheppards
and Lapsley
Presbytery



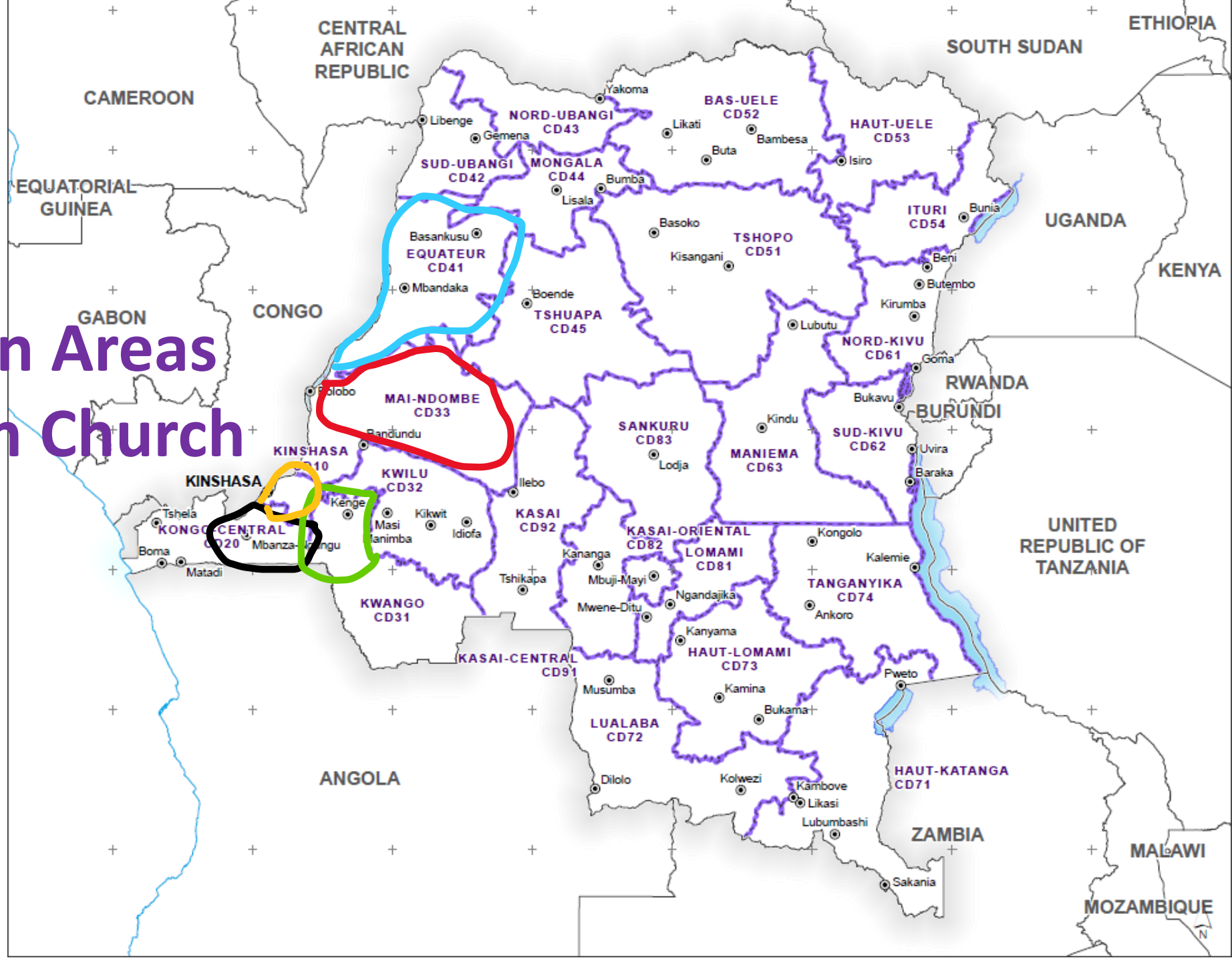
**Setting Up
Video
Recording**

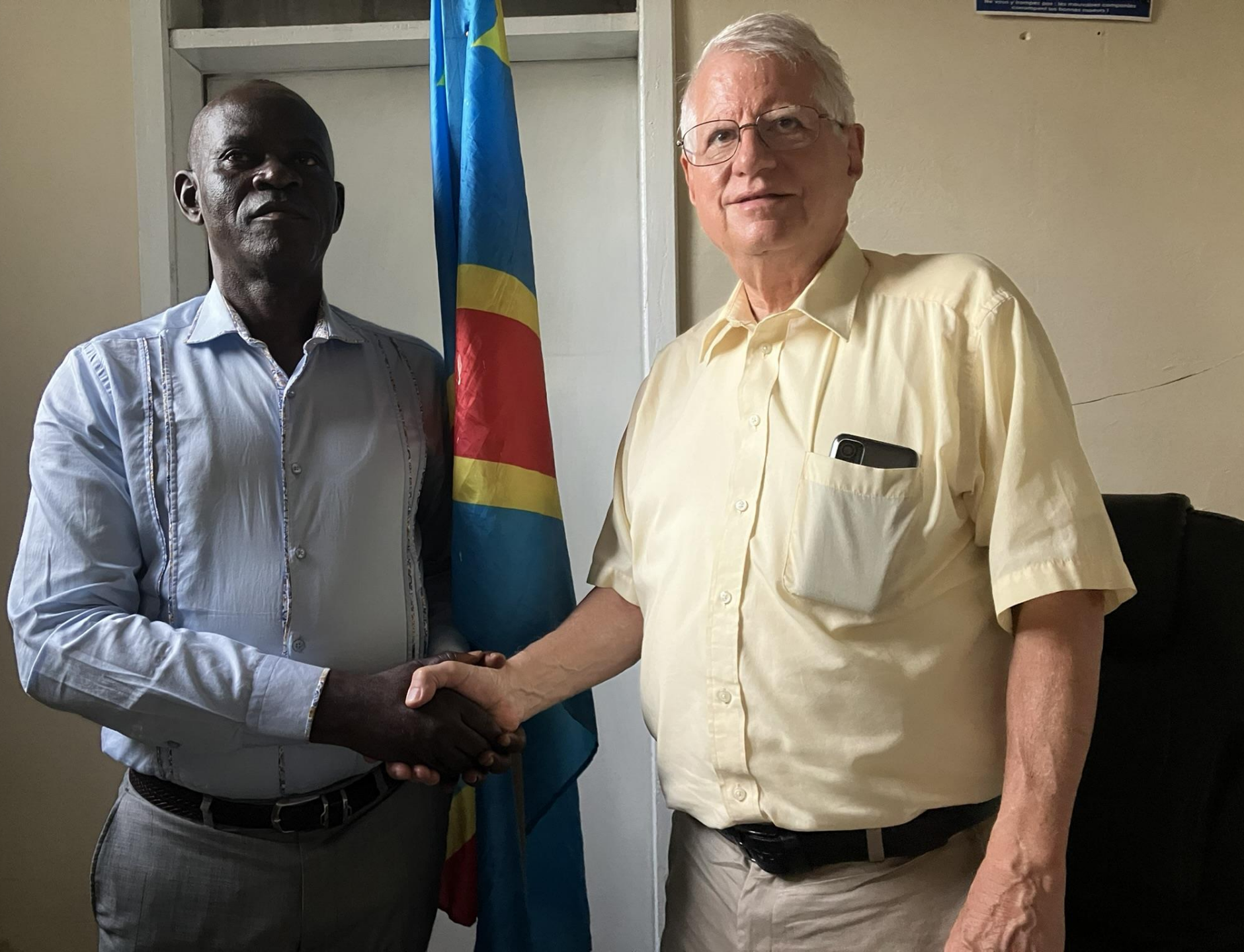
**Central CPC
Office
Kananga**

Coordination Areas Presbyterian Church of Congo (Kasai)



Coordination Areas
Presbyterian Church
Kinshasa





**School
Coordinator**

**Muamba Mpoyi
Mbuji-Mayi**

**Members of
Coordination
Office –
Mbuji-mayi**





**One of the
new
motorcycles
for
educational
program**

New Motorcycle

**Transportation for
School Inspectors/
Counselors**

Mbuji-Mayi



**Older School
- Kinshasa**

**Opportunities
for Rehab!**





**Older
School -
Kinshasa**

**Rehabilitation
Opportunities**



**Low water use
“dry” septic
system toilets**

**Sewing
machines
for tailoring
program
CPK
Monkengeli**





Coordinator
Ilunga and
Legal
Representative
Mboyamba in
Kananga





Local School in Kinshasa

Church and
teachers are
building new
classrooms.

School
authorized
for funding
when it has
a suitable
building





Typical
Principal's
desk

Note hand
sanitizers